

SANDRA
HOMewood
FUNERALS

MEMORIAL GUIDE



Our family, here for your family

We are a privately owned and managed family funeral business with over 40 years experience, assisted by like minded and highly enthusiastic principals and staff. We have no connection with any business outside the Sandra Homewood Group. We provide our team with training, a quality working environment, strong leadership and fairness. Our values are based on providing excellent service to our clients, transparency, fairness, good value and honesty.



Memorial Guide

A memorial is a lasting symbol of remembrance, a tribute to a life now ended, perhaps a final gift to someone dearly loved. It is therefore extremely important that its design should be carefully chosen.

This brochure has been created to offer you memorial designs in all of the traditionally used materials. Included in these are the finest of Italian marbles, coloured granites from all corners of the world and natural stones such as Portland, Purbeck, York and Slate which all originate from the British Isles.

However, if you are unable to find the memorial you require within the pages that follow, our skilled masons will be pleased to talk through your suggestions and prepare a unique memorial to suit your personal requirements.



The Crookham Collection

HM1



HM2



HM4



HM3



HM5



HM6



HM8



HM10



HM7



HM9



The Bentley Collection

HM11



HM12



HM14



HM13



HM15



HM16



HM18



HM20



HM17



HM19



The Basing Collection

HM21



HM22



HM24



HM23



HM25



HM26



HM28



HM30



HM27



HM29



The Warnborough Collection

HM31



HM32



HM34



HM33



HM35



HM36



HM38



HM40



HM37

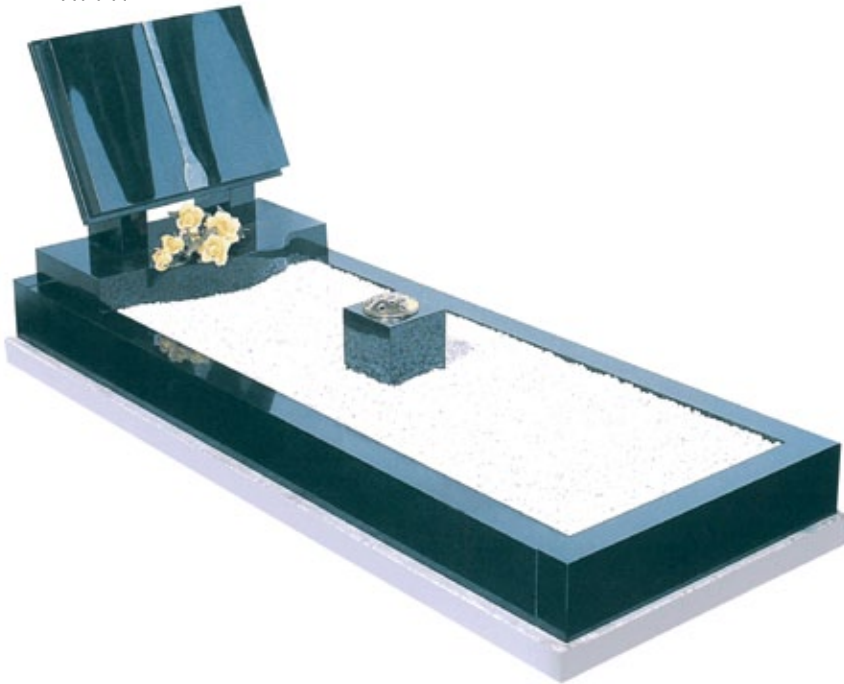


HM39

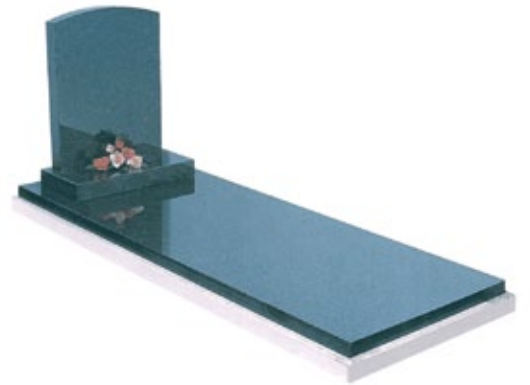


The Farncombe Collection

HM41



HM42



HM43



HM44



HM46



HM45



HM47



The Hambleton Collection

HM48



HM49



HM51



HM50



HM52



HM53



HM55



HM57



HM54



HM56



The Selbourne Collection

HM58



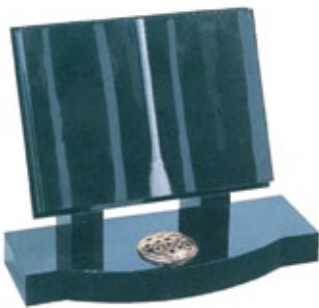
HM60



HM62



HM59



HM61



HM63



HM64



HM66



HM68



HM65



HM67



HM69



The Swallowfield Collection

HM70



HM72



HM74



HM71



HM73



HM75



The Greywell Collection (Cremation Size Memorials)

HM76



HM77



HM79



HM78



HM80



The Rotherwick Collection



The above ornament plate shows a selection of designs that can be applied to your memorial, or you may have a design of your own you wish us to add.

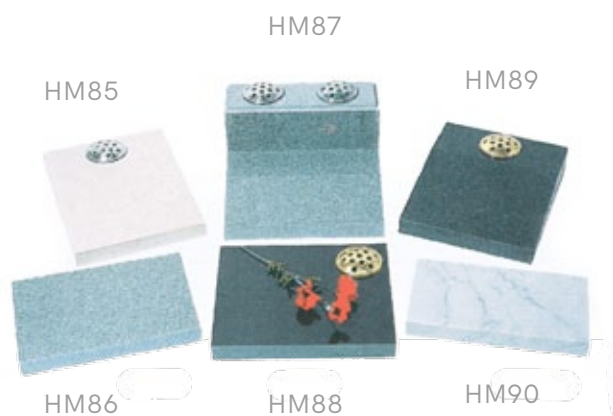


HM81

HM82

HM83

HM84



HM85

HM87

HM89

HM86

HM88

HM90



HM93

HM96

HM91

HM98

HM92

HM94

HM97

HM99

HM95

Choosing a Memorial

Churchyard and Cemetery Regulations

It is important to remember that Memorials erected in Churchyards should harmonise with their surroundings. Portland, York, Purbeck and Slate are materials of durable quality and accepted widely by Church Authorities. The Lighter Grey Granites may also be used. You will find Cemetery Restrictions differ and although they may vary slightly from place to place in most cases the full range of materials within this Brochure will be permitted.

Insurance

It is always advisable to insure a Memorial against Accidental Damage, Theft and Vandalism, making sure the cover takes effect immediately the stone is erected. We have full details of the schemes available on request.

Lettering Styles and Finishes

Old English

ROMAN LETTERING

BLOCK LETTERING

Commercial Script

Roman Upper & Lower Case

Block Upper & Lower Case

ROMAN ITALICS

BLOCK ITALICS

	Incised Only	Incised & Enamel	Incised & Gilded	Cut & Lead filled
Portland Stone	✓	✗	✗	✗
York Stone	✓	✓	✗	✗
Purbeck	✓	✓	✗	✗
Slate	✓	✓	✓	✗
Marble	Not Advisable	✓	✓	✓
Nabresina	✓	✓	✓	✓
Granite	Not Advisable	✓	✓	✗

Specific letter finishes can be applied to certain materials. This list is to assist you in choosing your lettering finish.

Suggested Inscription Formats

IN EVER LOVING MEMORY OF
A DEAR HUSBAND, FATHER
AND GRANDFATHER
(NAME)
1911 - 2005

TREASURED MEMORIES OF
OUR DEAR MOTHER
(NAME)
WHO PASSED AWAY
AGED 72 YEARS

Alternative Introductions

IN LOVING MEMORY OF

SACRED TO THE MEMORY OF

IN REMEMBRANCE OF

IN AFFECTIONATE

MEMORY OF

CHERISHED MEMORIES

A Selection of Texts

AT REST

RESTING

SLEEPING

ABIDE WITH ME

REST IN PEACE

SIMPLY THE BEST

IN GOD'S KEEPING

THY WILL BE DONE

PEACE PERFECT PEACE

FOREVER IN OUR THOUGHTS

NOT LOST, BUT GONE BEFORE

LOVES LAST GIFT REMEMBRANCE

HE LIVES FOREVER IN OUR HEARTS

GONE FROM US BUT NOT FORGOTTEN

FATHER IN THY GRACIOUS KEEPING, LEAVE
WE NOW OUR LOVED ONE SLEEPING

TO LIVE IN THE HEARTS OF THOSE
WE LOVE IS NOT TO DIE

GOD HAS YOU IN HIS KEEPING, WE
HAVE YOU IN OUR HEARTS

IN OUR MINDS A CONSTANT THOUGHT,
IN OUR HEARTS A SILENT SORROW

TO THE WORLD HE WAS JUST A PART,
TO ME HE WAS ALL THE WORLD

GOD TAKES OUR LOVED ONES FROM OUR
HOME, BUT NEVER FROM OUR HEARTS

HIS LIFE A BEAUTIFUL MEMORY, HIS
ABSENCE A SILENT GRIEF

THOUGH HER SMILE HAS GONE FOR EVER AND HER
HAND WE CANNOT TOUCH WE SHALL NEVER LOSE
SWEET MEMORIES OF THE ONE WE LOVED SO MUCH

GOD FOUND THE PATH WAS GROWING ROUGH, THE
HILL TOO STEEP TO CLIMB, SO HE GENTLY CLOSED
HIS EYELIDS, AND WHISPERED 'PEACE BE THINE'

LOVED ONE, THOU ART NE'ER FORGOTTEN, TIS
SWEET TO BREATHE THY NAME, IN LIFE I LOVED
YOU DEARLY, IN DEATH I DO THE SAME

LOVING AND KIND IN ALL HIS WAYS, UPRIGHT AND
JUST TO THE END OF HIS DAYS SINCERE AND TRUE IN
HEART AND MIND, A BEAUTIFUL MEMORY LEFT BEHIND

SO DEARLY LOVED, SO SADLY MISSED

TOO DEARLY LOVED TO BE FORGOTTEN

RESTING WHERE NO SHADOWS FALL

THE LORD IS MY SHEPHERD I SHALL NOT WANT

REST AFTER WEARINESS, PEACE AFTER PAIN

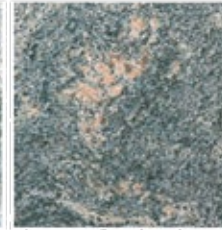
ONLY GOODNIGHT BELOVED NOT FAREWELL

UNTIL THE DAY BREAK AND THE SHADOWS FLEE AWAY

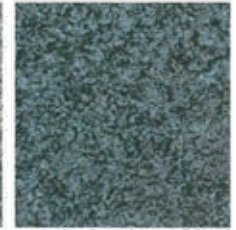
Materials



MOUNTAIN GREEN GRANITE



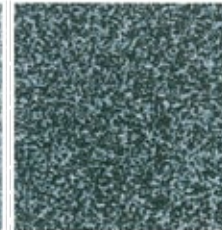
PARADISO



DARK GREY GRANITE



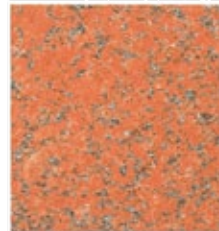
KARIN GREY GRANITE



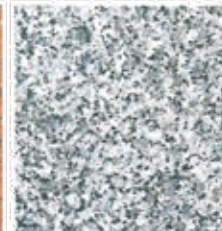
INDIAN COARSE DARK GRANITE



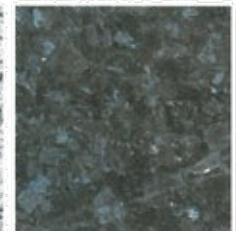
BLUE PEARL GRANITE



RUBY GRANITE



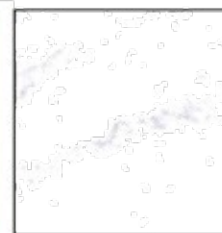
TARN GRANITE



EMERALD PEARL GRANITE



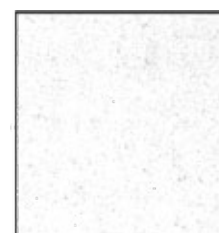
YORK STONE



WHITE MARBLE



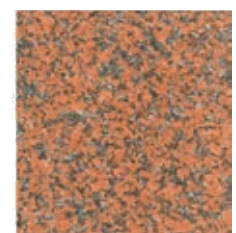
BLACK GRANITE



NABRESINA



PORTLAND STONE



BALMORAL RED GRANITE

Renovation Work

We offer a free, no obligation report on existing memorials. Should you wish, one of our qualified masons would be happy to meet with you in the cemetery/churchyard to discuss your requirements.

